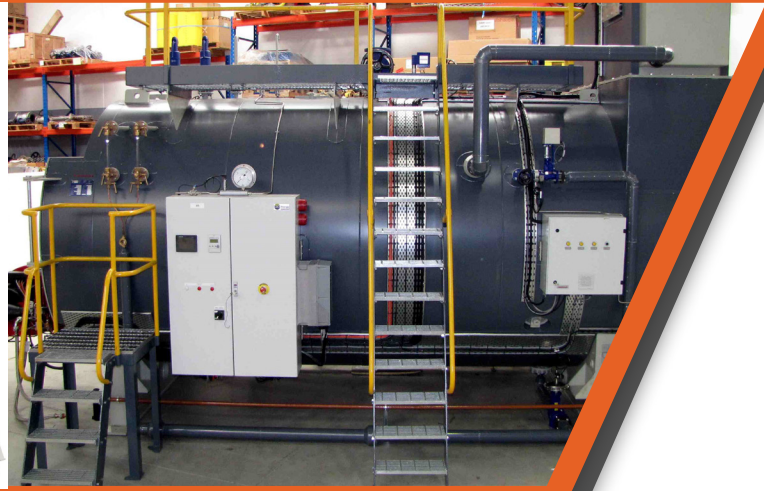


# STEAMPAC™ WB BOILERS



With over 40 years of experience, Windsor Energy is a world class supplier of energy systems to a diverse range of industries and institutions. Windsor is renowned for delivering efficient and reliable thermal energy systems and continues to improve its product range with the latest technological developments. The revolutionary Steampac™ Wet-Back (WB) boiler range integrates the best design features of gas/oil-fired package boilers.

## Steampac™ WB

Windsor Energy offers Steampac™ WB boilers in a wide range of capacities designed to EN12953. Steampac™ WB boilers utilise a full wet back design incorporating 3 complete gas passes within the boiler for maximum efficiency.

Windsor Steampac™ WB boilers are continually enhanced by incorporating the latest advancements along with carefully selected working components from reputable partners, achieving very high levels of reliability at low operating costs.

### Key Features

- High serviceability due to hinged front and rear doors
- Compact design for tight boiler house layouts
- Low emissions - low NOx
- High Steam quality (dryness) throughout the complete operating range due to a large steam chamber with integral demisters
- Large water and steam volumes - ready for peak demand and excellent for fluctuating demand
- High efficiency, up to 86% (with economiser)
- As standard fitted with state of the art Weishaupt or Drezler burners, ARI valves and Gestra instruments
- Comprehensive e-boiler™ PLC-based control system complies with AS 2593 and the New Zealand Unattended Boiler Code

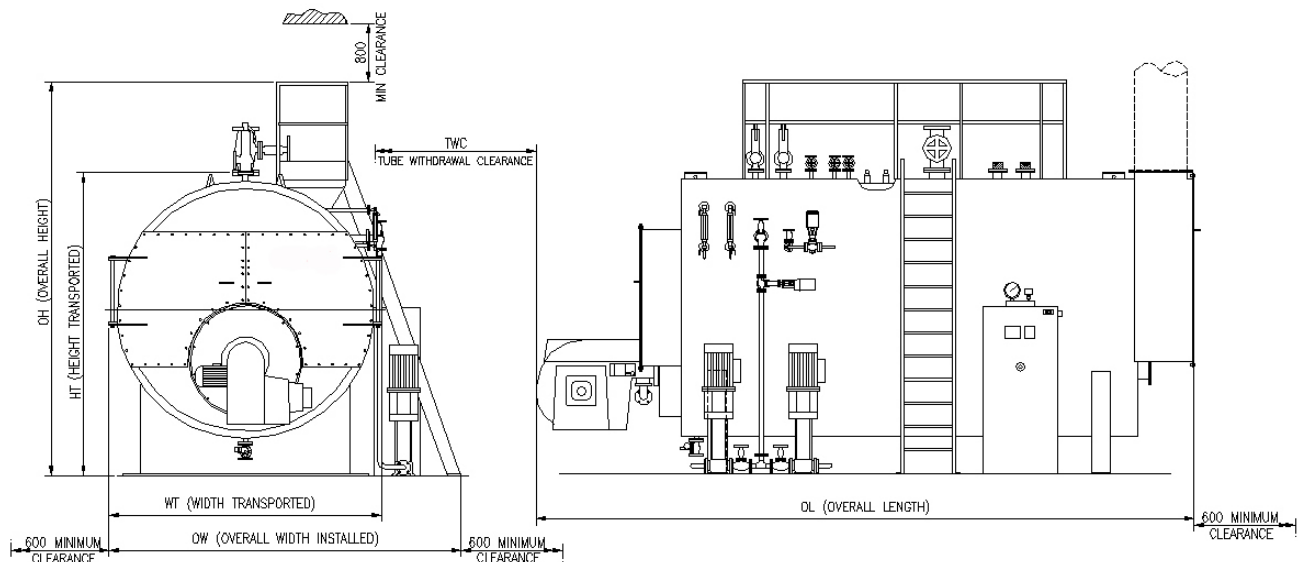
## Four reasons to invest in Steampac™ WB

- Designed in New Zealand
- Large evaporation surface and boiler volume effortlessly handles variations in your steam load
- Wide range of firing fuels (gas, light and heavy fuel oils) with dual fuel options
- Full after-sales support from Windsor Energy's nationwide service division in New Zealand

## Accessories and Options

- Flue gas economiser
- Feedwater tank (with steam heating and water level controls)
- Blowdown receiver
- Stack
- Access ladder and gallery
- Smaller and larger sizes and pressure options available up in the Steampac™ range (refer RF and WT range)
- Complete boiler system installation, commissioning and training on site
- Specialist, technical service for maintenance, annual surveys and energy system expertise throughout New Zealand

# STEAMPAC™ WB BOILERS



MODEL	Output kW	Rating kg/h	HT	WT	OL	OH	OW	TWC	Main Stop NB	Safety Valve	Stack OD	Shipping Weight kg	Operating Weight kg
WB4000	4000	6380	3000	2700	6800	3980	3460	2890	125	2 x 50	600	15000	28000
WB6000	6000	9570	3300	2900	7000	4210	3630	3020	150	2 x 65	700	17500	34000
WB7600	7600	12122	3450	3200	7150	4420	3880	3100	150	2 x 65	750	28000	45000
WB9550	9550	15233	3735	3400	7900	4650	5630	3120	200	2 x 65	900	33000	61250

Ratings refer to steam at 100°C being made from water at 100°C. Actual output depends on inlet water temperature and boiler operating pressure. Dimensions for boilers over 20,000kW are available from Windsor Energy on request. Windsor Energy reserves the right to change dimensions without notice.

## Why Windsor Energy?

As a trusted provider of energy plant and services in New Zealand and around the world, Windsor Energy offers the following advantages:

- Extensive installed base of heat plants in a range of industries.
- Modular plant package, optimised for long-distance transport of components, and efficient, safe assembly at destination.
- Innovative plant design for high efficiency, simple operation, high availability and low overall cost of ownership.

## Contact Us

Level 2  
6 Albion Street, Napier  
4110  
PO Box 1045, Napier 4140  
New Zealand  
P +64 6 899 5050  
E [energy@windsor.co.nz](mailto:energy@windsor.co.nz)  
[www.windsorenergy.co.nz](http://www.windsorenergy.co.nz)